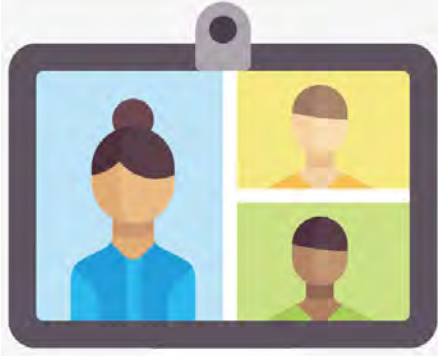


## RESEARCH STUDIO PROGRAM

**Goal:** To enhance the quality of your research proposal and improve funding success

NEW



**What is it?** A 90-minute, on-line personalized session for a new or early-stage RCMI investigator to meet with one or more data scientists and subject-matter experts to discuss a specific stage of research.

### Examples:

- Crafting a compelling Specific Aims page
- Refining an appropriate study design
- Strengthening the personal statement of your NIH Biosketch



### **Information for Scheduling a Studio Session**

1. Research Studio Type (NIH Biosketch; Research Question and Hypothesis; Specific Aims Page; Study Design)
2. General Research Category: Basic Science, Behavioral Science, Clinical Science, Community-Engaged Research, Population Science, Translational Science
3. Specific Research Area for Studio Session
4. Brief Description of Research Project (1–3 sentences)
5. Type of Grant Application (include link to funding announcement)
6. Date of Planned Grant Submission or Resubmission

Please complete the online request form at  
<http://www.rtrn.net/ResearchStudioSessionRequest>